

Katharion
THE CURE FOR SPAM

Email Client Setup Guide Netscape 7.1

WWW.KATHARION.COM

Step 1

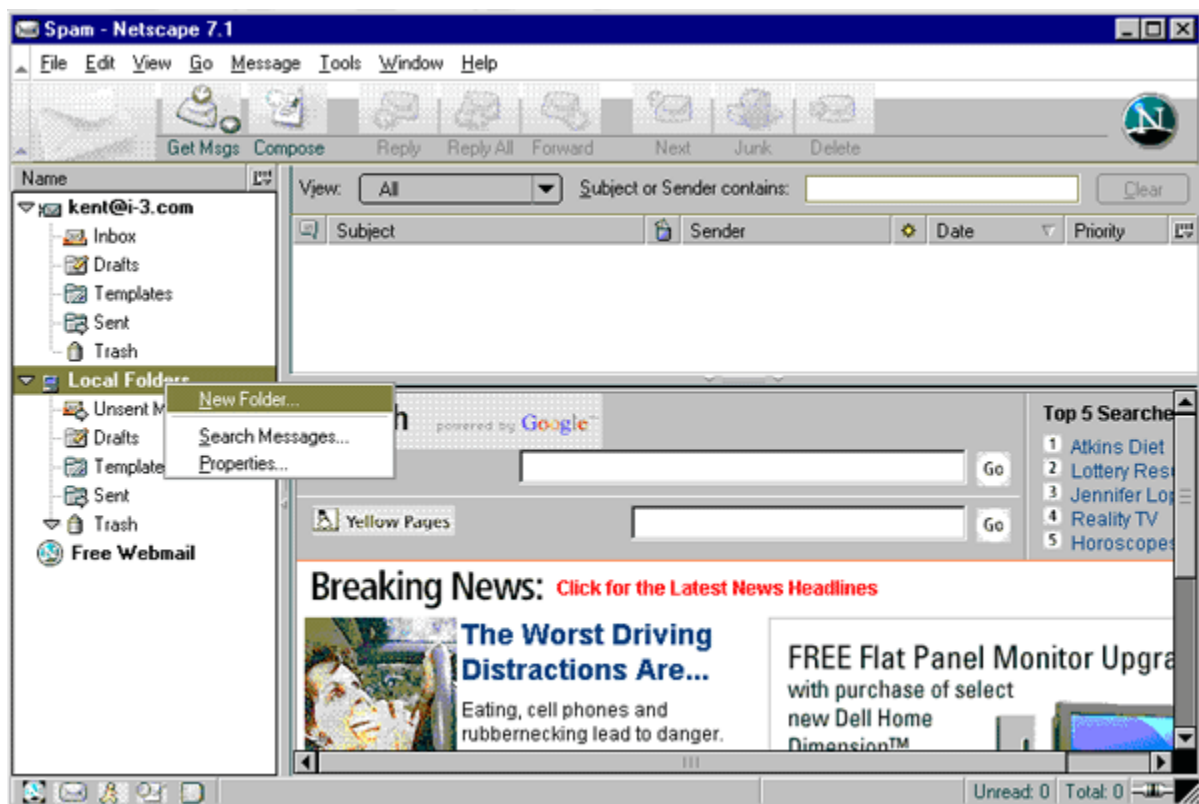
Open Netscape 7.1 Mail.

Step 2

Select **Local Folders** in the **Mail Folders** box.

Step 3

▼ Right click on **Local Folders** and select **New Folder** from the menu.

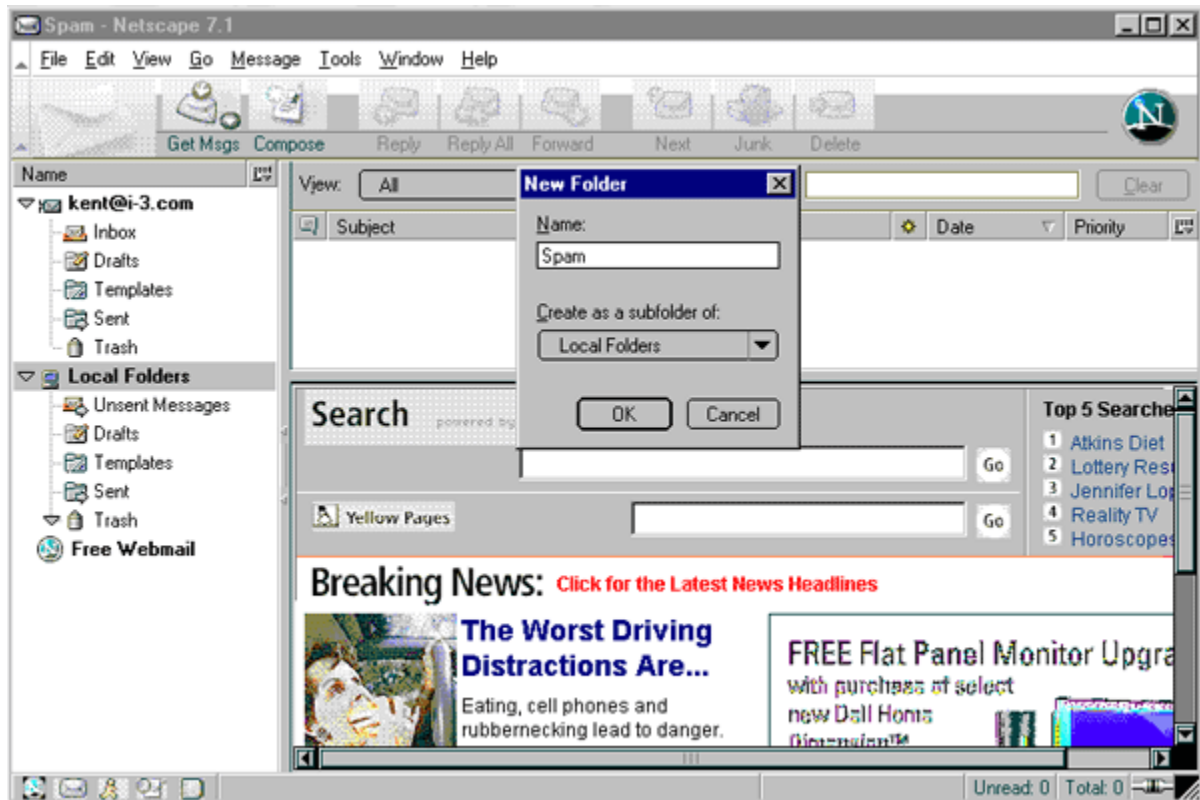


Step 4

Name the folder **Spam**.

Step 5

▼ Click **OK**.

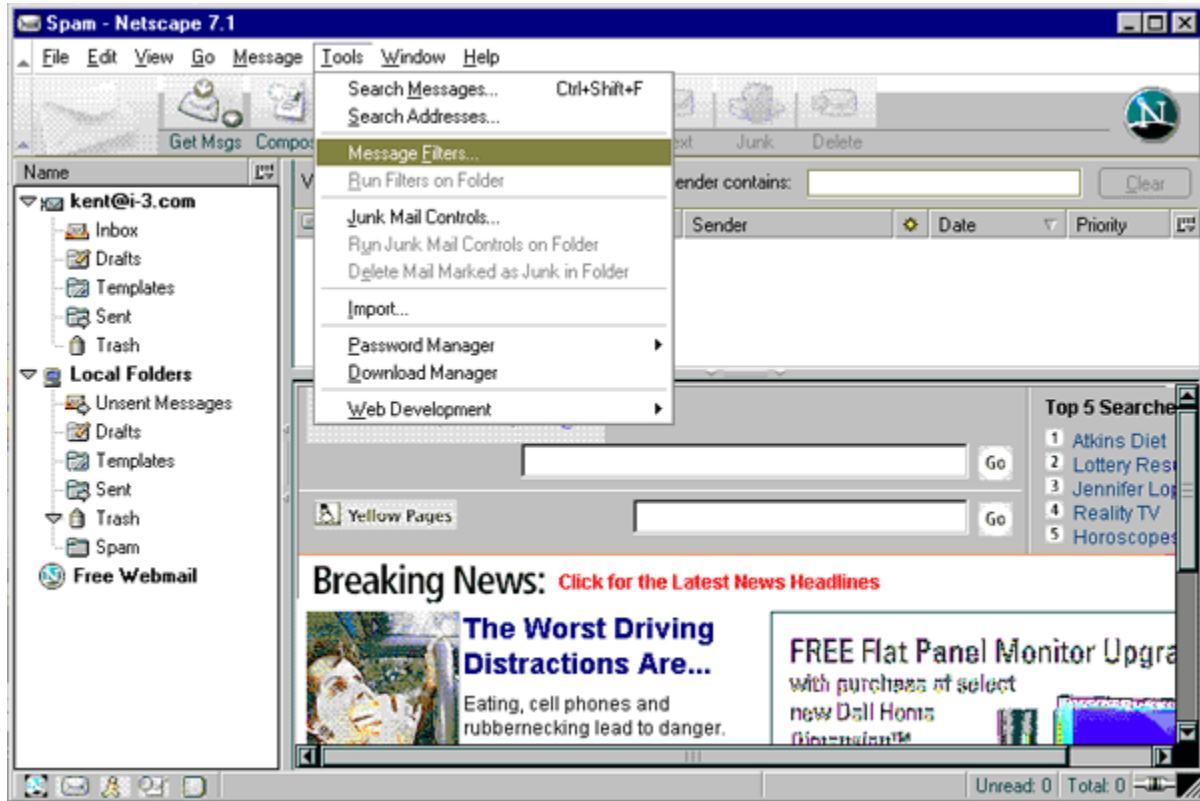


Step 6

Click on the **Tools** menu.

Step 7

▼ Select the **Message Filters** option.

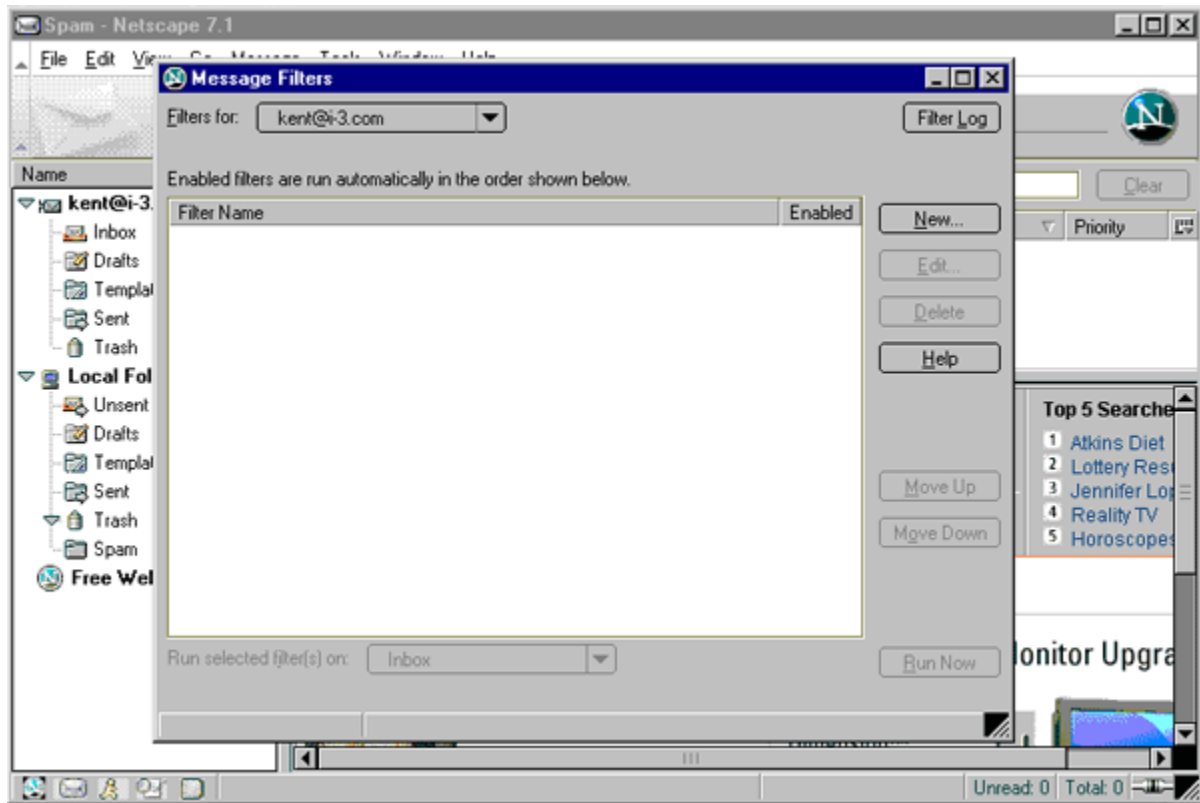


Step 8

Select your mail account from the **Filters For** pull-down menu.

Step 9

▼ Click the **New** button.



Step 10

Enter a name for the filter in the **Filter Name** box.

Step 11

Select the **match ALL of the following** radio button.

Step 12

Select **Subject** in the first pull-down menu and **Contains** in the second pull-down menu.

Step 13

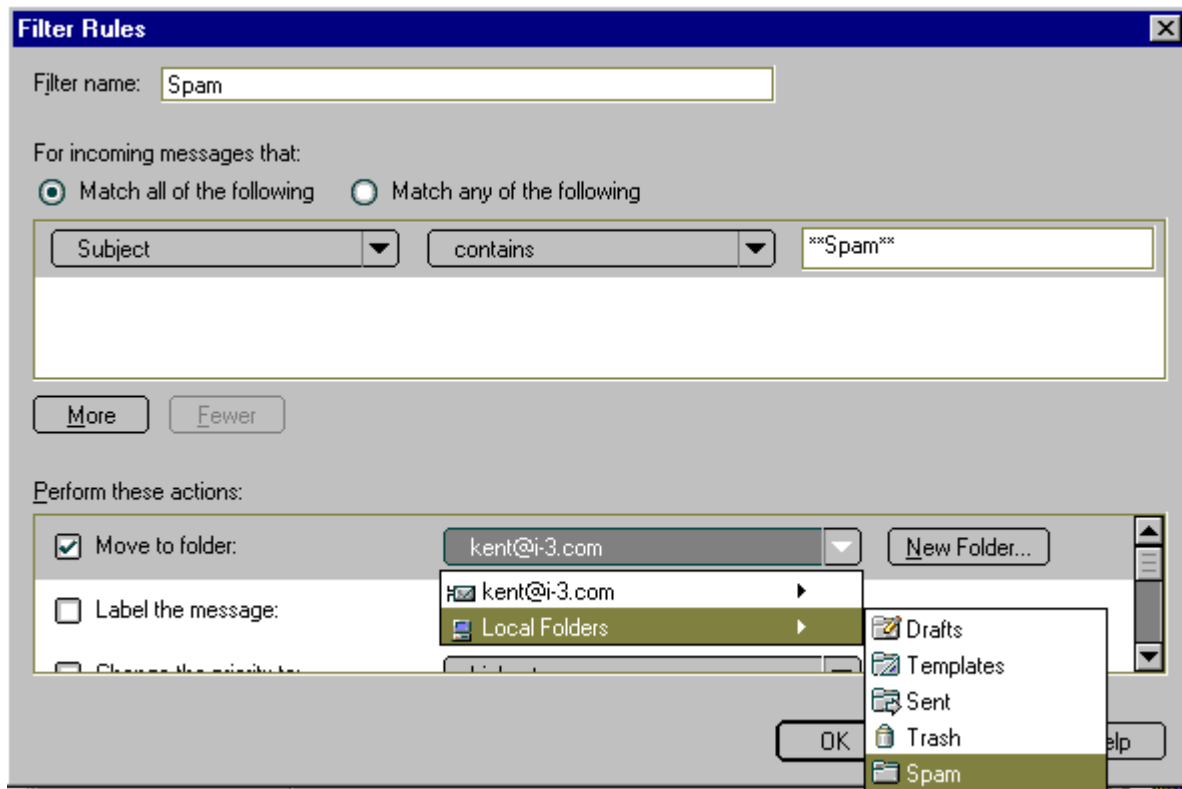
Enter ****SPAM**** in the text box.

Step 14

Select **Move to Folder** in the **Perform these actions:** area.

Step 15

▼ Select the **Spam** folder we just created in the **Perform these actions:** area.

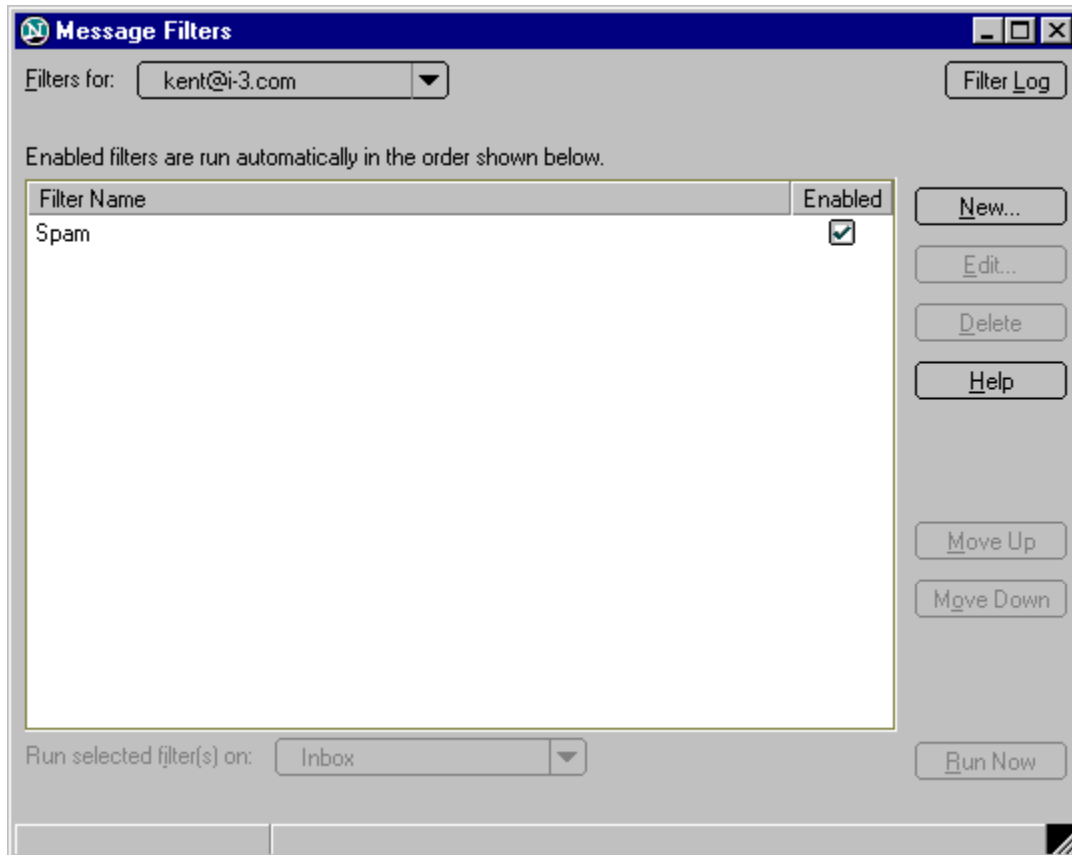


Step 16

Click **OK**.

Step 17

- ▼ Close the dialog box.



You are done!

All messages flagged as spam will now be collected in your Spam folder and will never reach your inbox. You may review the contents of your Spam folder periodically to ensure that legitimate messages have not been misclassified as Spam. (If there are some of these “false positives,” you will be presented with an opportunity to add those senders to a “white list” which will direct all future communications from those email addresses to your inbox.)